

Connecting to Secure Wireless with Windows Vista From the **Start** menu, select **Control Panel**.



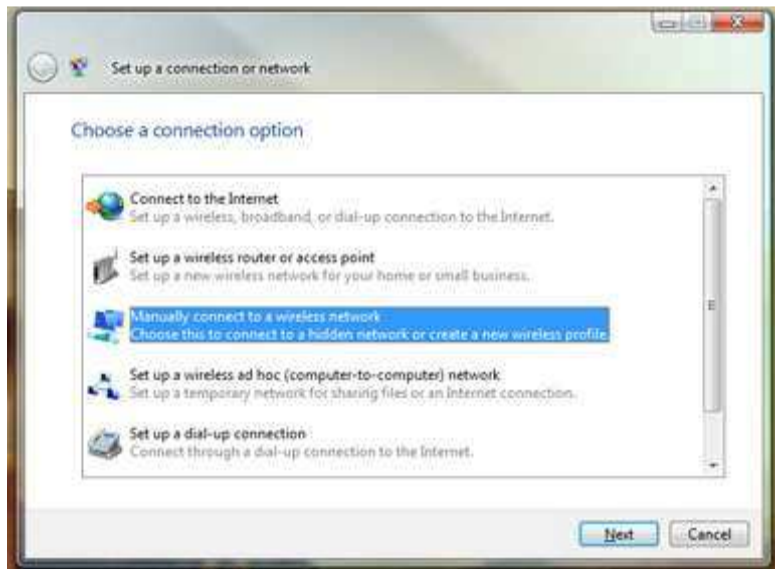
Click on **Network and Internet**. Click on **Network and Sharing Center**.





Click the **Set up a connection or network** link. Select **Manually connect to a wireless network** and click **Next**.

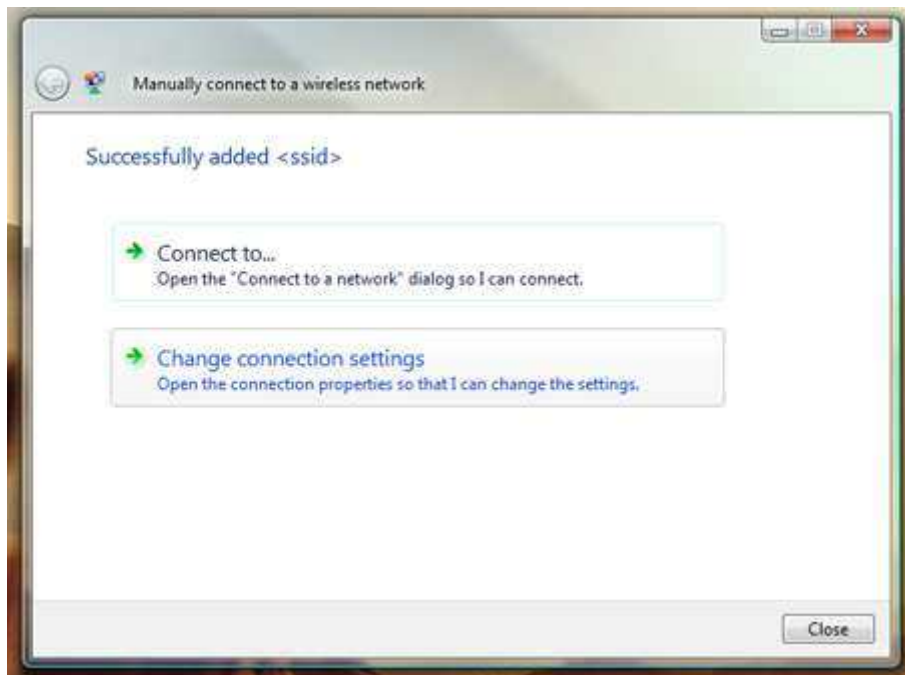




For network name, type in **SHUSTUR2** (it's case sensitive). For security type, select **WPA2-Enterprise** if available. Otherwise, choose **WPA-Enterprise**. If neither of these options are available, your wireless card does not support secure wireless. Please contact the helpdesk on how to obtain a newer wireless card. For encryption type, choose **AES** if available. Otherwise, choose **TKIP**. Click the **Next** button.



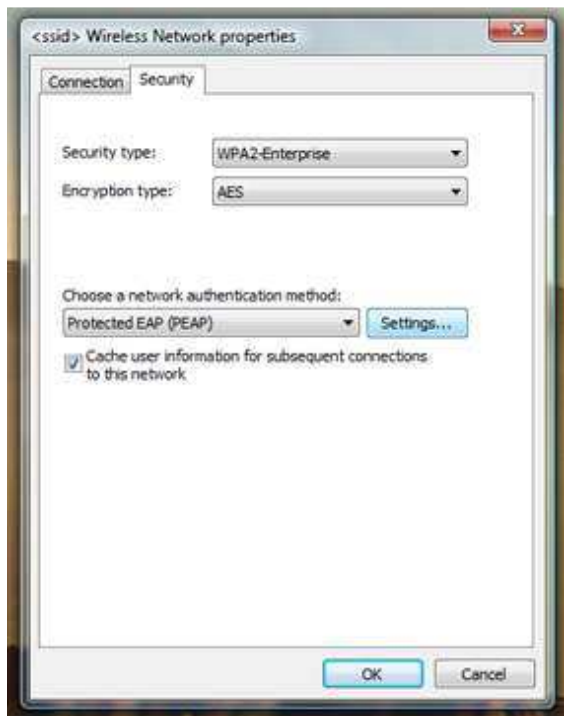
Click the **Change connection settings** button.



Click the **Security** tab.



Change the "Choose a network authentication method" dropdown to **Protected EAP(PEAP)**, if it is not already selected. Click the **Settings** button.



On the Protected EAP Properties window, uncheck the **Validate server certificate** option. Click the **Configure...** button.

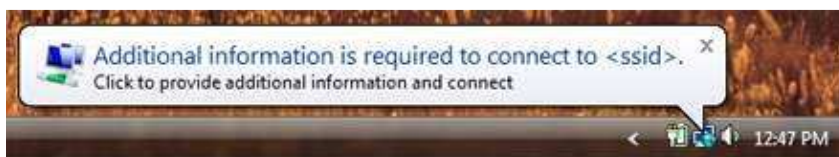


Uncheck the **Automatically use my Windows logon and password (and domain if any)** option.



- In each of the three windows you've opened, click the **OK** button. In the "Manually connect to a wireless network" window, click **Close**.

Click on the balloon that appears in the lower right-hand corner of your screen. You may have to wait for a few seconds before it appears.



■
In the Enter Credentials window, type your Seton Hill University user name and password and click the **OK** button.



Congratulations! You're finished. Need [help](#)? (opens in a new window)