

There are nine simple steps to set up 802.1x wireless on your Windows XP computer. Older computer users, please ensure that you have installed the latest drivers from your wireless card vendor. You may need to visit their website or call them to determine this information.

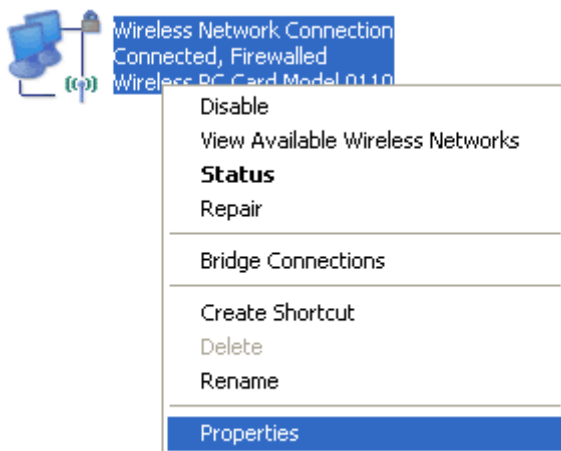
### Step 1

- From the **Start** menu, select either **Network Connections** or **Control Panel > Network Connections**.



### Step 2

- **Right click** on **Wireless Network Connection** and select **Properties**.



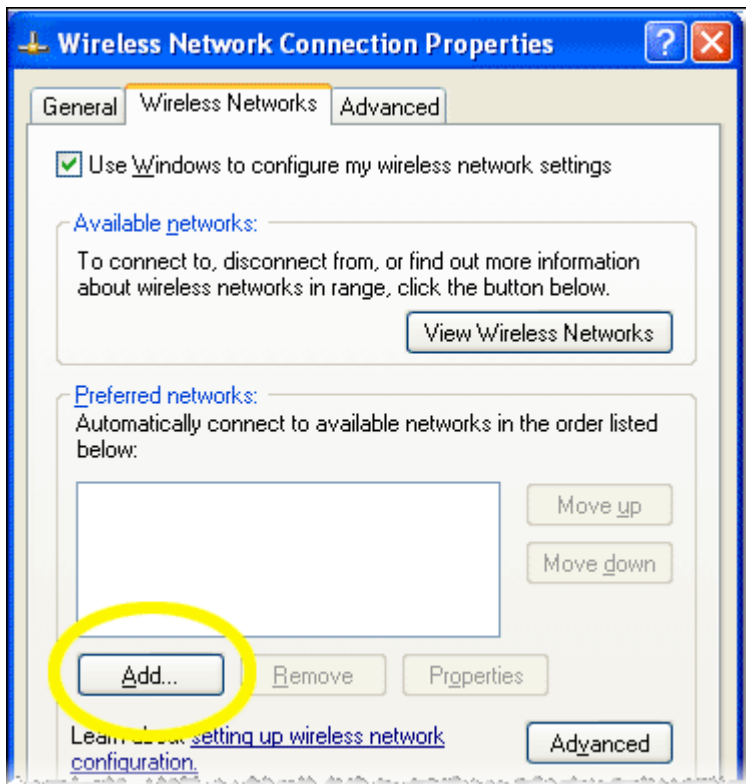
### Step 3

- In the Wireless Network Connection Properties window, select the **Wireless Networks** tab.



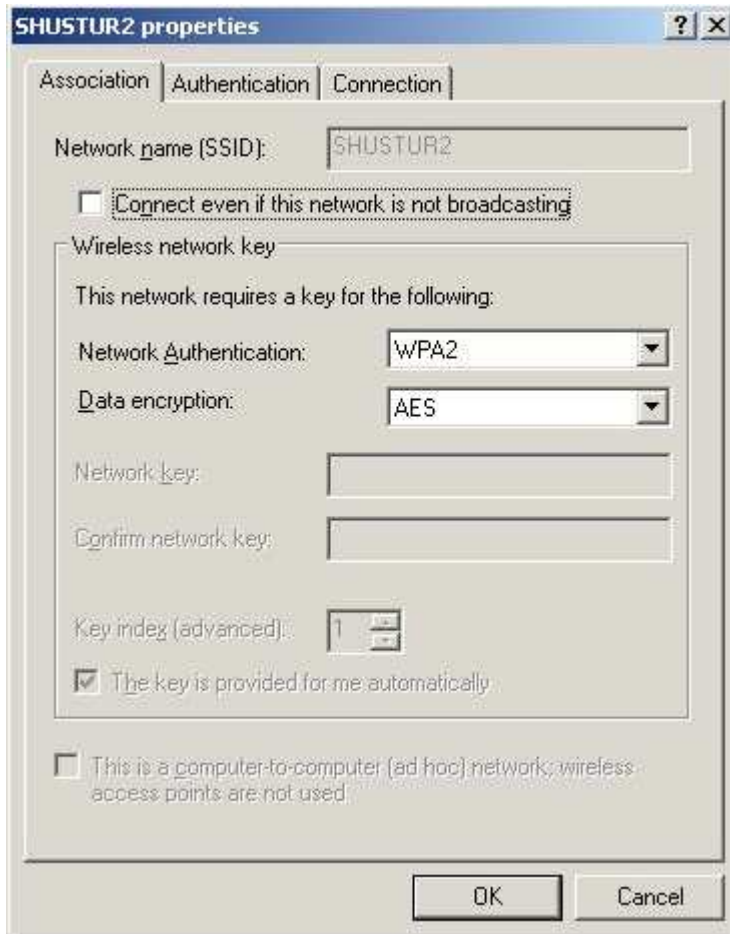
### Step 4

- Click the **Add...** button.



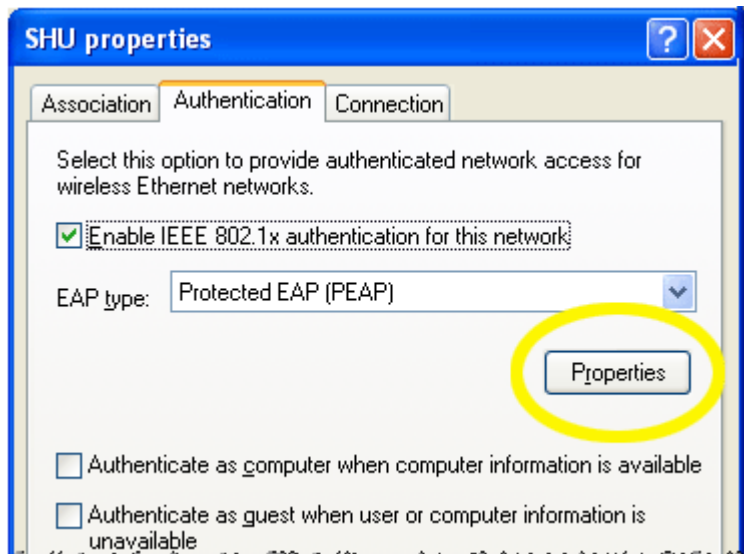
### Step 5

- In the Wireless network properties window, type **SHUSTUR2** in the **Network name** field.
- In the **Network Authentication** drop-down list, select **WPA2 or WPA**, depending on the type of wireless card you have. WPA2 is the latest version of security for wireless networks; however, to use WPA2 you must be running Microsoft Windows XP Service Pack 3 or later.



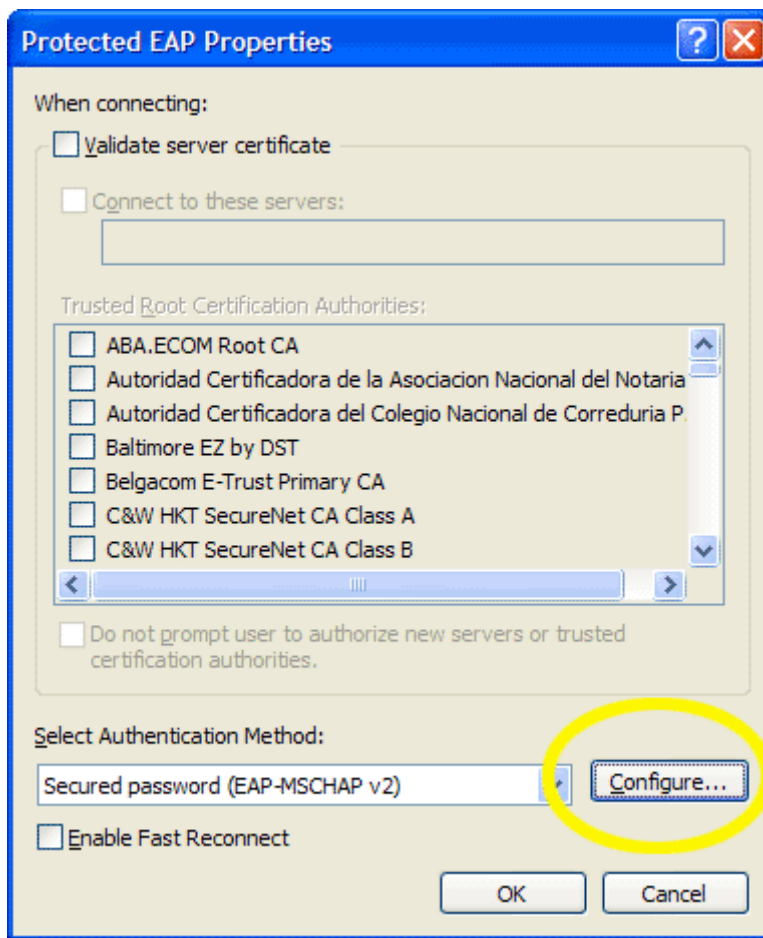
## Step 6

- Click the **Authentication** tab.
- In the SHU properties window, select **Protected EAP (PEAP)** from the **EAP type** drop-down box.
- Uncheck the **Authenticate as computer when computer information is available** option.
- Click the **Properties** button.



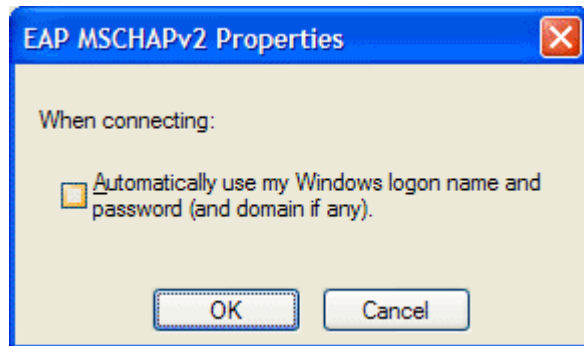
### Step 7

- On the Protected EAP Properties window, uncheck the **Validate server certificate** option.
- Click the **Configure...** button.



## Step 8

- Uncheck the **Automatically use my Windows logon and password (and domain if any)** option.



- In each of the four windows you've opened, click the **OK** button.

## Step 9

- Click on the balloon that appears in the lower right-hand corner of your screen.



- In the Enter Credentials window, type your Seton Hill University user name and password and click the **OK** button.



Congratulations! You're finished.